

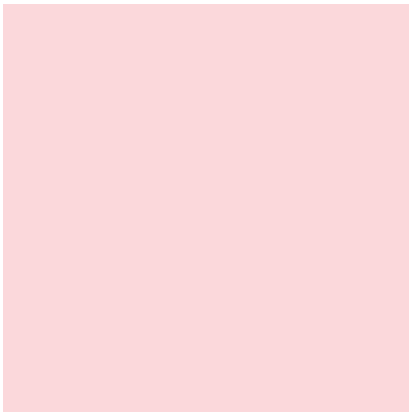
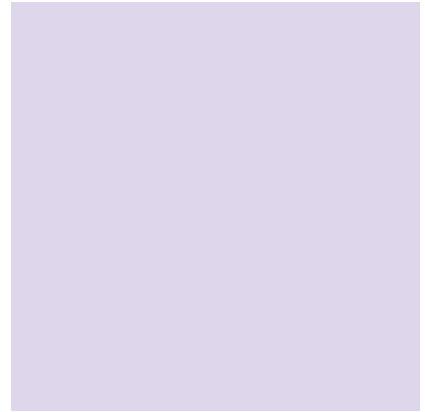
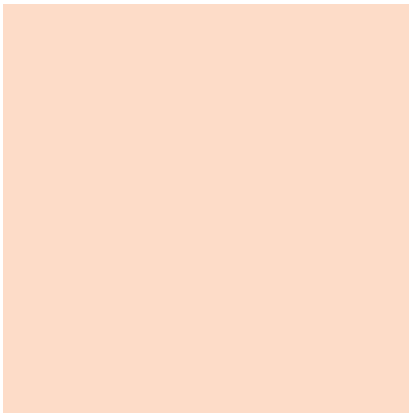


A3 Colour Multifunction Printer
Apeos C3061 / C2561 / C2061



Embark on your digital transformation journey

Designed to accelerate your digital transformation (DX) journey, new Apeos series with its smart and seamless integration features present itself as a trusted digital partner.



True scalable solutions to start your digital journey



Apeos C3061 / C2561 / C2061

Offering Scalability

Promote easier collaboration and enhanced accessibility with paperless office solutions.

Designing Simplicity

Designed for all, our devices deliver ease of use, accessibility and personalisation features for a true intuitive experience.

Creating Environmental Sensitivity

Driving organisation awareness towards creating a low impact environment with advance features such as low melting point (low energy) toner technology, smart power-saving sensors or staple-free finishing.

Apeos C3061

Colour/Monochrome
30 ppm*

Apeos C2561

Colour/Monochrome
25 ppm*

Apeos C2061

Colour/Monochrome
20 ppm*

* A4 LEF



Note: When optional Exit 2 Tray and USB memory kit are installed.

Designing simplicity for everyday business needs

Small footprint fits in every office space

The compact design with width of 577 mm and depth of 650 mm* fits everywhere, including tight spaces, maximising office space utilisation.

* For C2061 Model-P-1T.

Produce promotional materials in-house and on-demand

Supports wide range of paper size and weight*¹, giving you the flexibility to personalise and print on envelope, direct mail, posters, promotional banners, or even long POP displays*².

*1: Paper weight from 52 to 300 gsm

*2: Long sheets up to 297 x 1,200 mm



Make an impression with every print

Newly developed toner produces exceptional colours in every tone and shade, while high resolution of 1,200 x 2,400 dpi delivers precise lines and text, giving every print a professional look.



Easy-to-use, 7-inch control panel

Effortless and intuitive operation at the touch of your finger

The home screen allows individual user to customise frequently used app buttons and arrangement based on individual preference. Frequently used settings can be "pinned" for easy access on daily basis.

Additionally, you can connect your mobile devices through QR code scanning or NFC to Copy, Fax*¹, Print and Scan*^{1*2} jobs using the Print Utility*³ application.

Note: AirPrint, Mopria® Print Service, and Mopria Scan are supported for printing or scanning by using a mobile device.

*1: Standards for Apeos C3061 / C2561 / C2061(Model-PFS). Optional for C2061(Model-P).

*2: Scan to Mobile, E-mail, Scan to Folder.

*3: Connect to the machine via wireless environment or Wi-Fi Direct® connection. It can be downloaded free of charge from Google Play™ or App Store.



Finishing solutions that scale with business needs (Optional)

Exit 2 Tray, Side Tray

Supports output from three locations for Copy, Fax, and Print functions. This way, important received faxes are not missed, and output paper can be quickly retrieved.



Finisher-A3 + Side Tray

• Staple

3 Way output

Quiet design



Finisher-B4 / B5 + Booklet Maker Unit + Side Tray

- Staple
- Staple-free Staple*¹
- Punch*²
- Saddle Staple*³
- Single Fold*³



Supports single and double Staple-free Stapling*⁴



Staple-free Staple 10 Sheets*⁴

*1: Staple-free stapling is available with Finisher-B5. *2: Optional *3: Booklet Maker Unit is required. When specifying Saddle Staple or Single Fold with Finisher-B4/B5, paper is not folded but creased. *4: 80 gsm paper or less.

Promotes DX and collaboration with paperless office solutions

Note: Fax and Scan Functions are optional for Apeos C2061 Model-P

Quick digitisation of high-volume originals

1-sided scanning of up to 55 ppm*1

2-sided documents can be scanned automatically just by setting documents on Duplex Automatic Document Feeder (DADF).
110 sheets DADF paper capacity*2 allows you to digitise documents swiftly.



The large grip width makes it easier to lift the automatic document feeder.

- Supports scanning of small-size documents (125 x 85 mm)*3, thick cheques and thin paper receipts.
- Scanned documents can be transferred to e-mail, PC, or shared servers.
- Supports multi-sending, such as saving a copy to your PC while sending an e-mail to a client in a single scan.

*1: Our Standard Document (A4 LEF), 200 dpi, to Folder
*2: C² paper
*3: When 1-sided scanning

Streamline operations with paperless fax

Preview before print to reduce wastage

Content of received fax can be previewed on the control panel before printing, allowing you to delete unwanted documents such as unsolicited faxes and print only what is necessary to avoid paper wastage.

Don't miss important faxes, whether you are in the office or on the move

Faxes received can also be forwarded by e-mail, allowing you to check the content even when you are away from office.



Automate the tedious task of fax sorting with Paperless Fax Delivery*

By using Paperless Fax Delivery*, faxed documents can be automatically sorted and forwarded without printing. Manual sorting and organising of received documents are eliminated as they are automatically sorted into folders based on information such as fax number, received date and preregistered names in multifunction printer's address book.

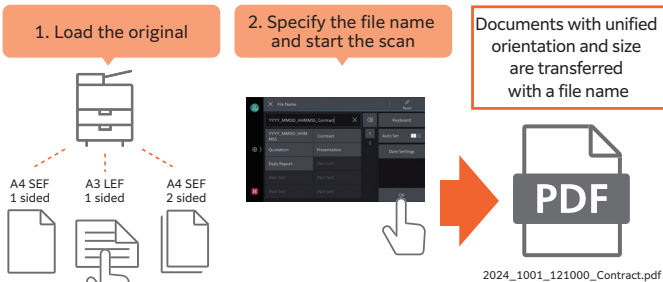
*Optional

Simple scanning to yourself

With ScanAuto, the pre-installed multifunction printer add-on application, you can easily send scanned data with a touch of a button and the multifunction printer will automatically select scan settings (such as document orientation, 1-sided or 2-sided) that are suitable for the document.

File names can be assigned from presets on the UI screen, ensuring scanned files will not get lost on the PC.

Note: The destination can be selected from Scan (Email) or Scan (to PC)



Digitisation of paper documents for effortless document management

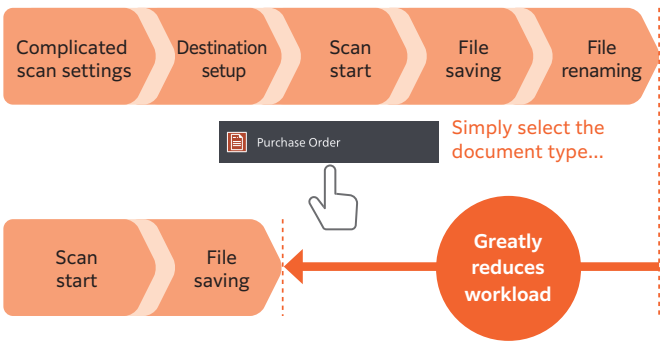
Scan Delivery Light* reduces your scanning workload by simplifying complicated and repetitive scanning workflow.

Standard rules and templates can be created easily, allowing you to complete multiple actions (scan settings, storage destination designation and file renaming) with a single touch.

Scanned information can also be managed and utilised centrally, improving productivity and resource optimisation.

* Optional

Scan Delivery Light



Safeguarding your DX journey with market-leading security

As network connected information devices, the multifunction printer is equipped with state-of-the-art security features to protect your valuable information assets from cyber-attacks and rapidly evolving security threats.

Protect from unauthorised user

- Unauthorised operations and access are prevented by user authentication and usage restrictions.
- Expansion with Secondary Ethernet* allows a single multifunction printer to be used on a separated network, etc.

* Optional

Protects Data

- Encryption of communication paths with TLS and IPsec
- Protection of scanned files and e-mails through encryption/electronic signatures
- Data writing to SSD is encrypted with robust AES-256 encryption, etc.

Protect from unauthorised access

- Account lock function
- Restriction of accessible IP addresses
- Prevention of software tampering during multifunction printer startup and operation
- Automatic repair function upon detection of tampering at startup, etc.

Prevent information leaks due to operational errors

- Fixing the delivery destination of scanned documents
- Double input of fax destinations, etc.

The multifunction printers of the future

FUJIFILM Business Innovation aims to address environmental issues through climate change mitigation and resource circulation efforts in our business activities. Our products are developed with unique innovations and technologies that balances environmental impact reduction and usability.

New toner and a fusing unit with low fixing temperature and high image quality

Adopted a new toner and a fusing unit that enable reducing power consumption during toner fixing, the most power-consuming process in multifunction printers.

By using functional resin, our newly developed toner has achieved industry-leading low fixing temperature*¹ that is 15 degrees lower than the toner used in previous models*².

In addition, the adoption of a new fixing unit achieved both low fixing temperature and exceptional image quality.

*1: The toner fusing temperature for A3 laser multifunction printers based on internal study conducted in July 2024.

*2: Toner used in the Apeos C2360 / C2060.

Designed for now and for the future

In the effort to promote recycling of resources, recycled plastic materials are used* for parts such as the front cover and trays. We have overcome challenges to devise ways to suppress uneven color of the appearance of recycled plastic, which is said to be difficult to mold. And by improving the strength and rigidity of the parts, we ensure the quality of the product.

Furthermore, our products have been redesigned to allow easy disassembly and cleaning, making them easy to reuse and recycle in the future.

* In the case of 4 Tray configuration with Duplex Automatic Document Feeder. 15 % of the total plastic weight of the device is recycled material.

Technologies for energy conservation

- Less energy and compact with high resolution printing on LED printhead.
- Saves energy with quick startup and smart power saving feature that solely powers on the required parts according to the functions being used by users.

Compliant with various environmental labels.



Contributing to smaller CO₂ emission with lightweight body

By optimising resin and sheet metal with thinning technology and revising the frame structure, we have achieved a reduction in body weight by 8.8 %* while maintaining the strength and contributing to CO₂ emissions reduction in logistics.

* When comparing Apeos C2061 Model-PFS-1T and Apeos C2060 Model-PFS with 1 Tray configuration.

Reliable support system

Easy solutions to resolve problems

From supplies replacement to unexpected device failures, most problems can be resolved without waiting for the service representatives or sales representatives.

1. Resolve problem using the "Help" function on the device

- Self Help information is available on the control panel
- Self Help information can be accessed via the mobile device by scanning the QR code displayed on the control panel

2. "Remote Assistance" with the help of operators

- Connects directly to the Support Centre
- An operator will remotely access the multifunction device to resolve the problem by guiding through the steps on the shared control panel

Keeping a close eye on your multifunction device on a daily basis

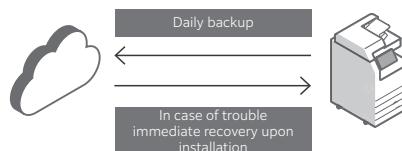
Connecting your multifunction printer to our EP service* via the internet allows for checking of billing meter, automatic delivery of consumables when cartridges level is low, daily status monitoring, and machine error detection for early intervention to rectify problem. This minimises operation downtime and reduces administrator's burden.

Note: The content of the services provided may vary depending on the usage region. For details, please contact one of our sales representative.

* You need to apply for using the EP service. (free of charge)

Device Setup Editor

Device Setup Editor is a service that always backs up the latest setting information to a cloud server. It allows you to be prepared for unexpected situations and use your multifunction printer with confidence.



Note: You need to apply for using the Device Setup Editor. (free of charge).

Set up and manage remote multifunction printers from the Remote Operation Panel

By launching the Remote Operation Panel from a web browser, the multifunction printer's control panel can be displayed to and operated from a PC. By logging into Administrator Mode, the system administrator can manage multifunction printers at remote business locations within the same intranet.

Note: Within the same intranet. While the Remote Operation Panel is active, the multifunction printer's control panel cannot be operated. Additionally, the Remote Operation Panel cannot be launched while the user is operating the multifunction printer.

Apeos C3061 / C2561 / C2061

Functions & Specifications

Basic Specifications / Copy Function

Item		C3061	C2561	C2061
Type		Desktop / Console		
Memory Capacity		4 GB (Max: 4 GB)		
Storage Device Capacity*1		256 GB		
Colour Capability		Full Colour		
Scan Resolution		600 x 600 dpi		
Printing Resolution		1,200 x 2,400 dpi		
Warm-up Time*2		[Embedded Plug-ins / Custom Services] *3 When enabled: 26 seconds or less (23 degrees Celsius room temperature) When disabled: 22 seconds or less (23 degrees Celsius room temperature)		
Recovery Time (Recovery Time from Sleep Mode)		13.6 seconds or less (23 degrees Celsius room temperature)	11.0 seconds or less (23 degrees Celsius room temperature)	
Original Size		Maximum of A3, 11 x 17", 297 x 432 mm for both Sheet and Book		
Paper Size	Tray 1*4	Max: A3, 11 x 17"; Min: A5 SEF, Envelope*5, Postcard (100 x 148 mm) Custom Size: 90 x 98 mm to 297 x 432 mm		
	Tray 2, 3, 4	Max: A3, 11 x 17"; Min: A5 SEF Custom Size: 140 x 182 mm to 297 x 432 mm		
	Bypass Tray	Max: A3, 11 x 17"; Min: A5 SEF, Envelope*6, Postcard (100 x 148 mm) Custom Size: 89 x 98 mm to 297 x 432 mm		
	Image loss width*7	Lead edge 4.0 mm, Trail edge 2.0 mm, Right / Left edge 2.0 mm		
Paper Weight*8*9	Paper Tray	52 to 300 gsm		
	Bypass Tray	52 to 300 gsm		
First Copy Output Time	B/W*10	4.6 sec.	5.9 sec.	
	Colour*11	6.0 sec.	7.9 sec.	
Continuous Copy Speed*12	A4 LEF / B5 LEF	B/W: 30 ppm Colour: 30 ppm	B/W: 25 ppm Colour: 25 ppm	B/W: 20 ppm Colour: 20 ppm
	A4	B/W: 23 ppm Colour: 23 ppm	B/W: 19 ppm Colour: 19 ppm	B/W: 16 ppm Colour: 16 ppm
	B5	B/W: 17 ppm Colour: 17 ppm	B/W: 14 ppm Colour: 14 ppm	B/W: 11 ppm Colour: 11 ppm
	B4	B/W: 20 ppm Colour: 20 ppm	B/W: 16 ppm Colour: 16 ppm	B/W: 13 ppm Colour: 13 ppm
	A3	B/W: 17 ppm Colour: 17 ppm	B/W: 14 ppm Colour: 14 ppm	B/W: 11 ppm Colour: 11 ppm
Paper Tray Capacity*13	Standard	600 sheets x 4-tray + Bypass Tray 110 sheets	Model-1T: 600 sheets x 1-tray + Bypass Tray 110 sheets Model-2T: 600 sheets x 2-tray + Bypass Tray 110 sheets Model-4T: 600 sheets x 4-tray + Bypass Tray 110 sheets	600 sheets x 1-tray + Bypass Tray 110 sheets
	Optional	-	1 Tray Module / 1 Tray Module with Cabinet: 600 sheets x 1-tray 3 Tray Module: 600 sheets x 3-tray	
	Max	2,510 sheets [Standard]	Model-1T: 2,510 sheets [Standard] +3 Tray Module] Model-2T: 1,310 sheets [Standard] Model-4T: 2,510 sheets [Standard]	2,510 sheets [Standard +3 Tray Module]
Output Tray Capacity*13*14		400 sheets (A4 LEF), 200 sheets (A3)		
Power Supply		AC100 V +/- 10 %, 15 A, 50/60 Hz common		
Maximum Power Consumption		1.5 kW Sleep Mode: 0.3 W Low Power Mode: 47 W Ready Mode: 76 W	1.5 kW Sleep Mode: 0.3 W Low Power Mode: 46 W Ready Mode: 71 W	
Dimensions		W 587 x D 650 x H 1,120 mm	Model-PFS-1T: W 577 x D 650 x H 769 mm Model-PFS-2T: W 587 x D 650 x H 1,120 mm Model-PFS-4T: W 587 x D 650 x H 1,120 mm	Model-P-1T: W 577 x D 650 x H 687 mm Model-PFS-1T: W 577 x D 650 x H 769 mm
Weight*15		83 kg	Model-PFS-1T: 60 kg Model-PFS-2T: 81 kg Model-PFS-4T: 83 kg	Model-P-1T: 55 kg Model-PFS-1T: 60 kg

*1: Storage Device Capacity is not totally available for customers. *2: It may change depending on usage conditions. *3: Embedded Plug-ins / Custom Services are enabled as factory default. *4: 98 x 90 mm to 372 x 241 mm is available when the Envelope Feeder is on. *5: Supported standard envelope sizes are Commercial #10, Monarch 7 3/4, DL, ISO-C4, etc. *6: Supported standard envelope sizes are ISO-C4 and ISO-C5. *7: Up to A3 size. *8: It is recommended to use our recommended paper. Correct print output may not be possible depending on the requirement. *9: 106 to 300 gsm, when the Envelope Feeder is on. *10: A4 LEF / Monochrome priority mode. *11: A4 LEF / Colour priority mode. *12: The speed may be reduced due to the image quality adjustment. *13: C² paper *14: When installing the optional Exit 2 Tray, the Center Tray capacity is 250 sheets (A4 LEF), and the Exit 2 Tray capacity is 250 sheets (A4 LEF). *15: Excluding Toner Cartridge.

Print Function

Item	Description	
Type	Built-in type	
Print Size	Tray 1	Same as the Basic Specifications / Copy Function
	Tray 2, 3, 4	Same as the Basic Specifications / Copy Function
	Bypass Tray	Max: A3, 11 x 17", Min: A5 SEF, Envelope*1, Postcard (100 x 148 mm) Custom Size: 89 x 98 mm to 297 x 1,200 mm*2
	Image loss width*3	Lead edge 4.0 mm, Trail edge 2.0 mm, Right / Left edge 2.0 mm
Continuous Print Speed*4	Same as the Basic Specifications / Copy Function	
Printing Resolution	Standard	[ART EX Driver] Standard: 1,200 x 2,400 dpi, High Quality: 1,200 x 2,400 dpi, High Resolution: 1,200 x 1,200 dpi
	Optional	[Adobe® PostScript® 3™ Driver] High Speed (Standard): 600 x 600 dpi, High Quality: 1,200 x 2,400 dpi, High Resolution: 1,200 x 1,200 dpi
Page Description Language	Standard	ART EX
	Optional	Adobe® PostScript® 3™
Supported Operating System*5	Standard	[ART EX Driver] Windows 11 (64 bit), Windows 10 (32/64 bit), Windows Server 2025 (64 bit), Windows Server 2022 (64 bit), Windows Server 2019 (64 bit), Windows Server 2016 (64 bit)
		[Mac OS X Driver] macOS 15 / 14 / 13 / 12 / 11
	Optional	[Adobe® PostScript® 3™ Driver] Windows 11 (64 bit), Windows 10 (32/64 bit), Windows Server 2025 (64 bit), Windows Server 2022 (64 bit), Windows Server 2019 (64 bit), Windows Server 2016 (64 bit)
		macOS 15 / 14 / 13 / 12 / 11
Interface	Standard	Ethernet 1000BASE-T / 100BASE-TX / 10BASE-T, USB3.0, Wireless LAN (IEEE 802.11a / b / g / n / ac)

*1: Supported standard envelope sizes are Commercial#10, Monarch 7 3/4, DL, ISO-C4, etc. *2: Long paper of 106 to 220 gsm (Extra Heavyweight) is available. The printed papers are delivered to the Side Tray when Finisher-A3 is attached. *3: Up to A3 size. *4: The speed may be reduced due to the image quality adjustment. The printing speed may be reduced depending on the document. *5: Please refer to our official website for the latest supported OS.

Scan Function(Optional)

Item	Description
Type	Colour Scanner
Scan Resolution	600 x 600 dpi, 400 x 400 dpi, 300 x 300 dpi, 200 x 200 dpi
Scan Speed	Same as the Scan Speed for the Duplex Automatic Document Feeder
Interface	Standard
	Ethernet 1000BASE-T / 100BASE-TX / 10BASE-T, Wireless LAN (IEEE 802.11a / b / g / n / ac)

Note: Optional only for Model-P.

Fax Function (Optional)

Item	Description
Original Size	Max: A3, 11 x 17", Long document (Longest 600 mm*1)
Recording Paper Size	Max: A3, 11 x 17"; Min: A5
Transmission Time	2 seconds and more but fewer than 3 seconds*2
Transmission Mode	ITU-T G3
Applicable Lines	Telephone subscriber line, PBX, Fax communication (PSTN), Maximum 3 ports*3 (G3-3 ports)

Note: Optional only for Model-P.

*1: When Duplex Automatic Document Feeder is used. *2: When A4 size document with approximately 700 characters is transmitted in standard image-quality (8 x 3.85 lines/mm) and in high-speed mode (28.8 kbps or faster, JBIG). Only indicates the time for transmitting the image information and does not include the communication control time. The total communication time will vary depending on the contents of the document, the type of machine receiving the fax, and line condition. *3: No. of FAX lines is up to 3 ports. Port refers to number of channels for FAX.

Duplex Automatic Document Feeder B1-C(Optional)

Item	C3061	C2561	C2061
Original Size*1 / Paper Weight	Max: A3, 11 x 17"; Min: A6 38 to 128 gsm (In Duplex: 50 to 128 gsm)		
Capacity*2	110 sheets		
Scan Speed*3	Copy (A4 LEF, Simplex)	B/W: 30 ppm Colour: 30 ppm	B/W: 25 ppm Colour: 25 ppm
	Scan	B/W: 55 ppm, Colour: 55 ppm [Standard Document (A4 LEF), 200 dpi, to Folder.]	B/W: 20 ppm Colour: 20 ppm
Dimensions / Weight	W 540 x D 560 x H 95 mm, 7kg		

Note: Optional only for Model-P.

*1: Custom Size is 125 x 85 mm to 297 x 432 mm. *2: C² paper. *3: The scanning speed varies depending on the documents.

Side Tray (Optional)

Item	Description
Paper Capacity*	100 sheets
Dimensions / Weight	W 328 x D 540 x H 198 mm, 3 kg

* C² paper.

Item		Description
Type	Center Tray	Stack
	Finishing Tray	Sort (Offset available*1*2) / Stack (Offset available*1*2)
Paper Size	Center Tray	A4, A3
	Finishing Tray	Max: A3, 11 x 17"; Min: A6, Postcard (100 x 148 mm) Custom Size: 89 x 98 mm to 297 x 432 mm
Paper Weight	Center Tray	52 to 300 gsm
	Finishing Tray	52 to 256 gsm
Paper Capacity*3	Center Tray	A4 LEF: 125 sheets; A4 SEF, A3: 50 sheets
	Finishing Tray	[Without Stapling] A4 LEF: 500 sheets, B4: 250 sheets, A3 or larger: 200 sheets, Mixed Size Stacking*4: 250 sheets
		[With Stapling] A4 LEF: 30 sets or 500 sheets, B4: 250 sheets, A3 or larger: 200 sheets, Mixed Size Stacking*4: 250 sheets
Staple	Capacity	A4: 50 sheets (90 gsm or less), B4 or larger: 30 sheets (90 gsm or less)
	Paper Size	Max: A3, 11 x 17"; Min: B5 LEF Custom Size: 203 x 182 mm to 297 x 432 mm
	Paper Weight	52 to 256 gsm
	Position	Single stapling, Dual stapling
Dimensions / Weight		W 465 x D 484 x H 248 mm, 11 kg

Finisher-B4 / B5 (Optional)

Item		Finisher-B4	Finisher-B5
Type	Center Tray	Stack	
	Finishing Tray	Sort (Offset available*1*2) / Stack (Offset available*1*2)	
Paper Size*3	Center Tray	Max: A3, 11 x 17"; Min: A5; Custom Size: 148 x 148 mm to 297 x 432 mm	
	Finishing Tray	Max: A3, 11 x 17"; Min: A5; Custom Size: 148 x 148 mm to 297 x 432 mm	
Paper Weight*4	Center Tray	52 to 300 gsm	
	Finishing Tray	52 to 300 gsm	
	Center Tray	200 sheets (80 gsm or less)	
Paper Capacity*5		[Without Stapling] A4: 2,000 sheets, B4 or larger: 1,000 sheets, Mixed Size Stacking*6: 300 sheets	
	Finishing Tray	[With Stapling] A4: 100 sets or 1,000 sheets*7, B4 or larger: 75 sets or 750 sheets	
		[With Booklet Finishing*8] 50 sets or 600 sheets	
		[With Fold*9] 500 sheets	

Item	Finisher-B4	Finisher-B5
Capacity	50 sheets (90 gsm or less)	Staple: 50 sheets (90 gsm or less) Staple-free Staple*9*10: 10 sheets (80 gsm or less)
Staple		
Paper Size	Max: A3, 11 x 17"; Min: A5 LEF Custom Size: 210 x 148 mm to 297 x 432 mm	
Paper Weight	52 to 256 gsm	Staple: 52 to 256 gsm Staple-free Staple*9*10: 64 to 105 gsm
Position	Single stapling, Dual stapling	
Punch*11		
Paper Size*12	Max: A3, 11 x 17"; Min: A5 LEF Custom Size: 210 x 148 mm to 297 x 432 mm	
Paper Weight	52 to 220 gsm	
Number of Holes	2-hole / 4-hole punch	
Booklet Finishing*8		
Paper Size	Max: A3, 11 x 17"; Min: A4, Letter Custom Size: 210 x 279 mm to 297 x 432 mm	
Capacity	Saddle Staple: 15 sheets, Single Fold: 5 sheets	
Paper Weight	Saddle Staple: 64 to 80 gsm*13, Single Fold: 64 to 105 gsm	
Dimensions*14*15	W 618 x D 653 x H 1,047 mm With Booklet Maker Unit: W 618 x D 673 x H 1,076 mm	
Weight	26 kg Punch Module: + 2 kg, Booklet Maker Unit: + 10 kg	28 kg Punch Module: + 2 kg, Booklet Maker Unit: + 10 kg

*1: Staple-free stapling is available with Finisher-B3.
 *2: The offset feature is set to disabled by factory default. *3: Outputs whose weight is 257 gsm and more or width is less than 210 mm are delivered without offset stacking. *4: Paper in the sizes larger than A3 or 11 x 17" or smaller than A5 are delivered to the Centre Tray. *4: Documents may not be printed correctly depending on usage conditions. *5: 2 to 55 gsm, 257 gsm and more. *5: C paper. *6: When a larger size sheet is stapled on top of smaller size sheets, 750 sheets or less of small double stapling. *7: The Booklet Finishing function requires the optional Booklet Maker Unit for Finisher-B. Make a case allows you to fold easily. After a job with the Booklet Finishing function specified has been output, the next job may not be delivered until the sheets are removed from the output tray. Also, if larger size sheets are stacked on top of smaller size sheets after a job with the Booklet Finishing function specified has been run, the next job may not be delivered until the sheets are removed from the output tray. *9: Staple-free stapling is available with Finisher-B5. *10: Staple-free stapling does not have binding force equal to stapled stapling. Bound part may be easily separated depending on the paper, temperature, humidity, and how the page is turned over. *11: The Punch function requires the optional 2/4 Hole Punch Module for Finisher-B. *12: Available number of punch holes varies depending on the paper size. *13: Covers can be up to 220 gsm (Extra Heavyweight). *14: Inner connector within the body is excluded. *15: When the Extension Tray is pulled out.

- 1) If the storage media of the base unit fail, loss of received data, accumulated data, registered setting data, etc. may occur. In no event shall "the company" be liable for any damages whatsoever arising from loss of data.
- 2) Functional spare parts will be available for at least 7 years after the product is no longer manufactured

The information is as of July, 2025. DGE-1494E (2507)